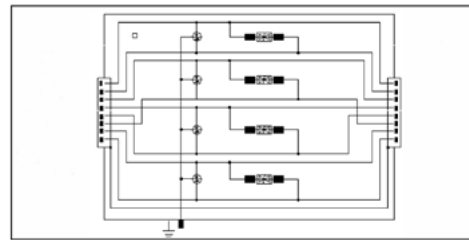


SURGE PROTECTIVE DEVICES FOR DATA AND COMMUNICATION NETWORKS.

- In data lines, surge protective devices must be installed as close as possible to the devices to be protected.
- Protection of data lines in accordance with IEC 61643:21-2005.
- 16 módulos de protección contra sobretensiones para conector RJ45.
- Two-stage protection.
- 19 " design suitable for standard rack.
- Transmission speed 100 Mbps.
- Specific use for Ethernet 10/100 BaseT, ATM and Token ring network protective devices.



Scheme and dimensions of TD-RJ45H Cat6-POE

MODELO EQUIPO	TD/5-RJ45H-8 Cat6-POE
Connection mode	Series
Nominal voltage / Transmission speed	5 V _{DC} / 1Gbps
Connection type / Pins - Pins _{POE}	RJ45 hembra-hembra / Datos: 1-2, 3-6, 4-5, 7-8 - Pins _{POE} : 1&2-3&6, 4&5-7&8
Nominal current I _L	0,8 A
Protected lines	8 wires
Series impedance per line	-
Comportamiento frente a sobretensiones	
Type of protection	3
Maximum continuous operating voltage (U _c)	Datos: 5 V _{AC} / 6V _{DC} - POE: 57V _{DC}
Nominal discharge current (8/20) I _n	2,5 kA
Maximum discharge current I _{max} (8/20)	5 kA
Protection level (U _p 1kV/μs)	Datos: ≤25 V POE: ≤600 V
Protection steps	2
Datos para su instalación	
Enclosure material	Metallic
Installation method	35 mm DIN-rail mounting
Operating temperature	[0 °C ... +40°C]
IP protection degree	IP 20
Location category	Indoor
Weight (Kg)	0,1
Dimensions (mm) (Height×Wide×Depth)	40×82×30